

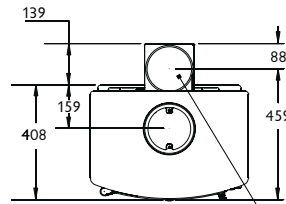
charnwood 

COVE 2

STOVE DIMENSIONS

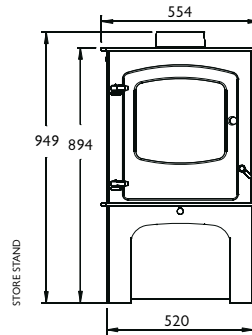


With its gentle curved door and soft lines the Charnwood COVE 2 creates a powerful centre point for any room. It delivers a respectable 8kW of heat with a maximum output of 11kW. The base options give the stove three very different looks. The low stand is perfect for fitting the appliance into a standard fireplace opening whilst the store stand and centre stand are ideal for a large inglenook or a freestanding situation.

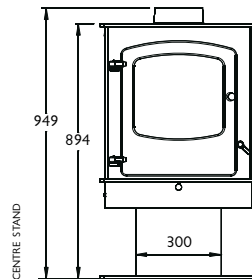
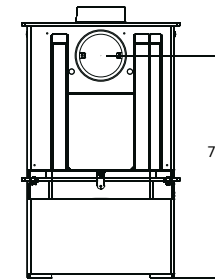
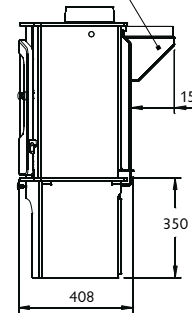


TOP VIEW

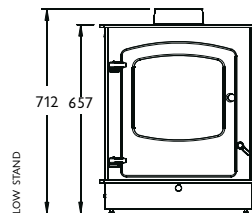
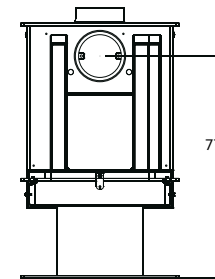
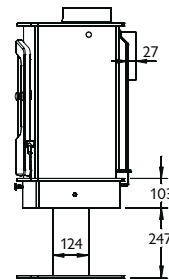
Optional Vertical Rear Flue Adapter



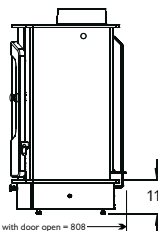
STORE STAND



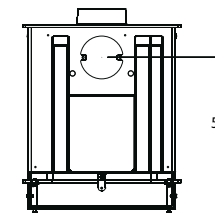
CENTRE STAND



LOW STAND



← Max dimension with door open = 808



FRONT VIEW

SIDE VIEW

BACK VIEW

Heat Output to Room

Nominal 8kW (27,300 Btu/hr) -
Maximum 11kW (37,400 Btu/hr)

Flue Outlet

Top or Rear 150mm (6") diameter

Maximum Log Length

370mm (14.5 inches)

Weight

Store Stand: 133kg

Centre Stand: 146kg

Low Stand: 127kg

Optional Accessories

Ash Carrier

Vertical Rear Flue Connector

